

IBM SPSS Installation and Registration

The following set of instructions will walk you through installing IBM SPSS on your computer.

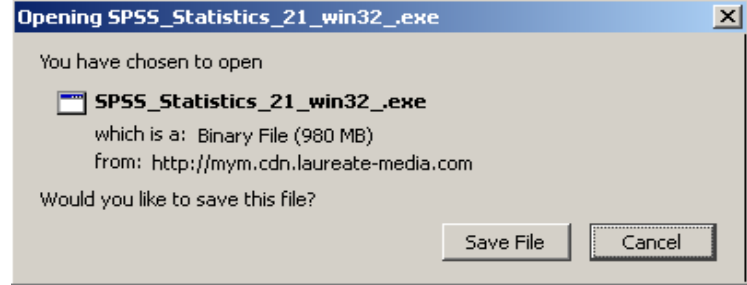
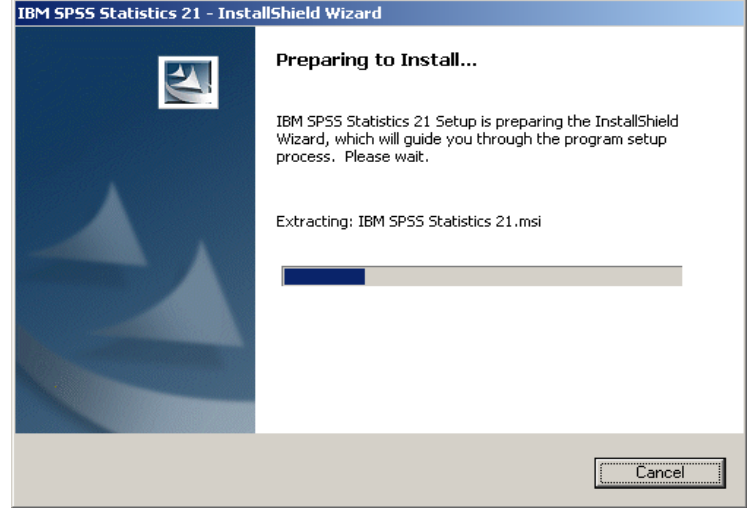
A visual tutorial is also available - http://mym.cdn.laureate-media.com/2dett4d/Walden/software/IBM/SPSS/Docs/New%20Folder/SPSS_Install_Windows.htm

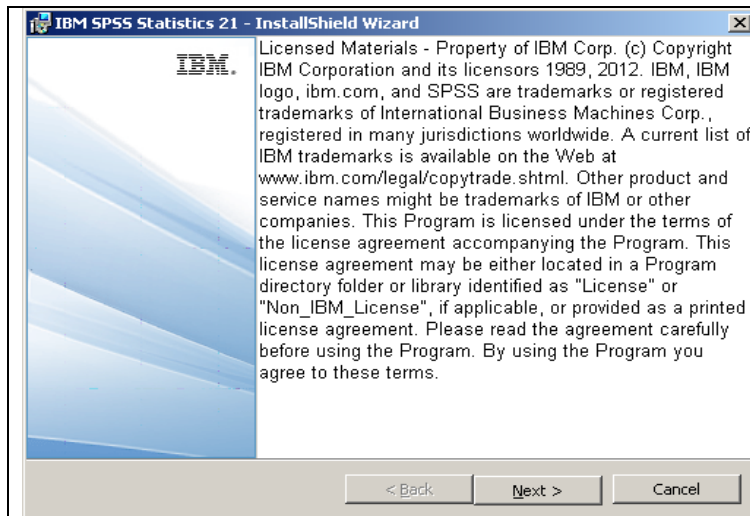
SPSS software installation link for the MAC and Windows is given below. Access the appropriate installation link depending on your operating system (Windows or Mac):

Mac: http://mym.cdn.laureate-media.com/2dett4d/Walden/software/IBM/SPSS/mac_version/SPSS_Statistics_21_mac_.dmg

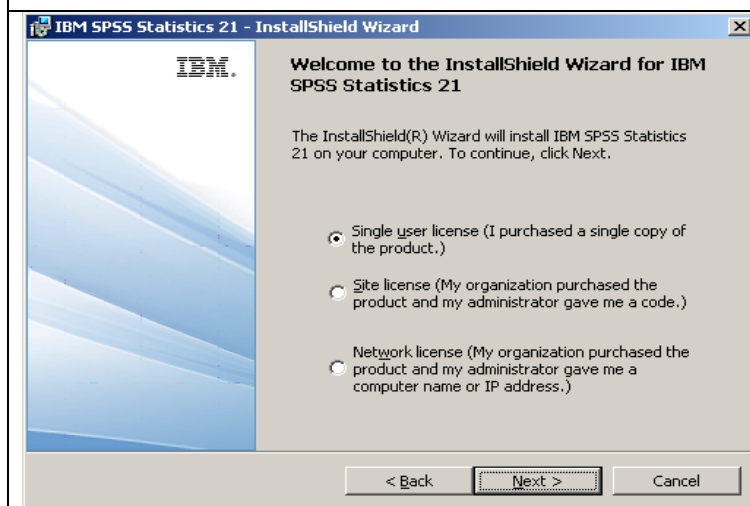
Windows: http://mym.cdn.laureate-media.com/2dett4d/Walden/software/IBM/SPSS/win_version/SPSS_Statistics_21_win32_.exe

This installation requires at least 1GB of free space on your computer. Because of the large size of the installation file, it is recommended that you are on a DSL or better internet connection. Even with a strong internet connection, the installation may still take up to 30 minutes or longer. While the tool is installing, you may continue to work within other applications on your computer.

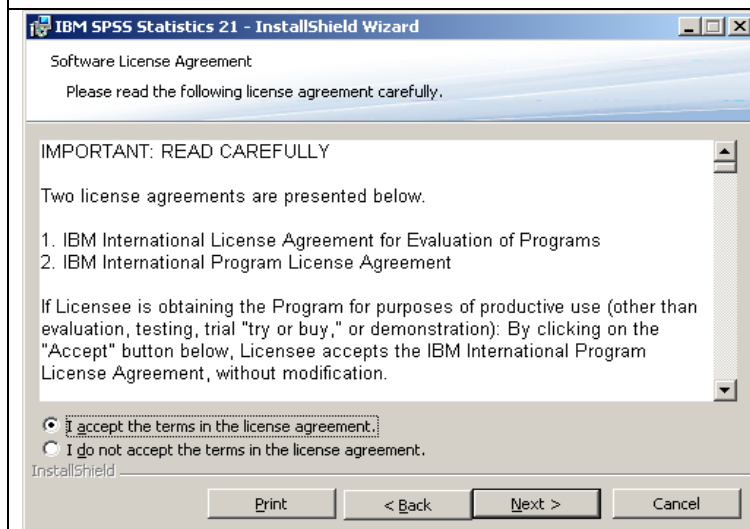
	<p>When prompted, save the file in the desired location on your computer. <i>(Note: Depending on your browser, this screen may look a little different.)</i> This step may take up to about 20 minutes if you are on a 128 Kbps internet connection. Once the file has been saved, run the file.</p>
	<p>The install wizard will appear.</p>



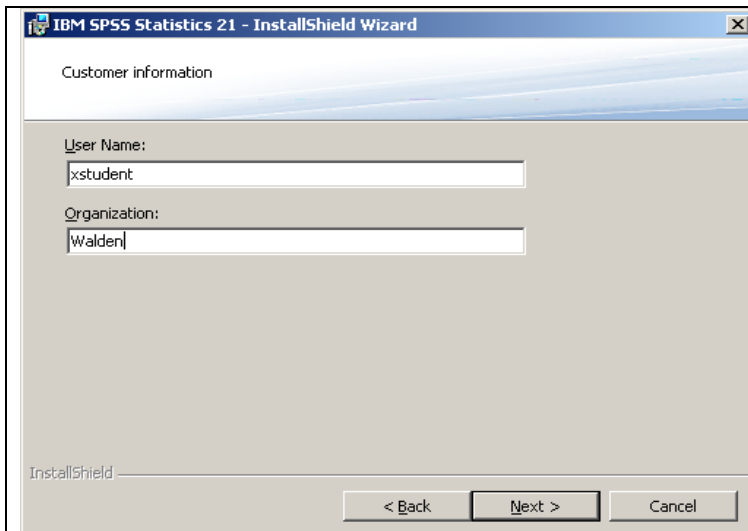
Navigate through the License Agreement screens by clicking **Next**.



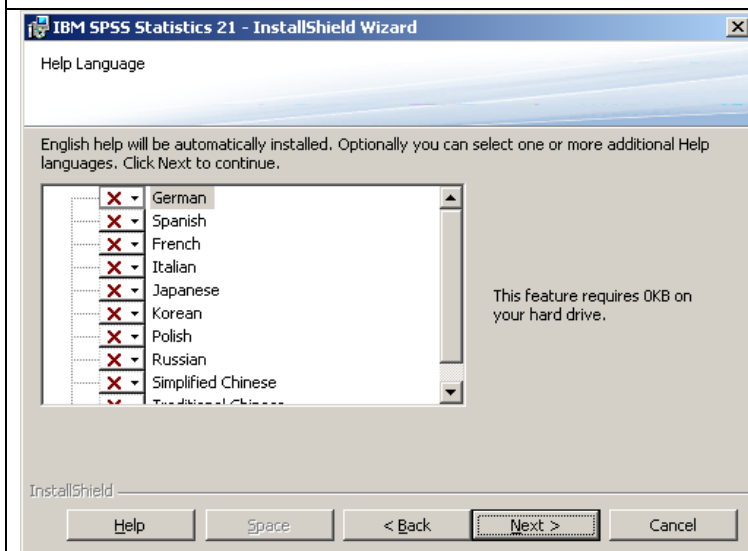
When prompted, for the license type, select **Single user license** and click **Next**.



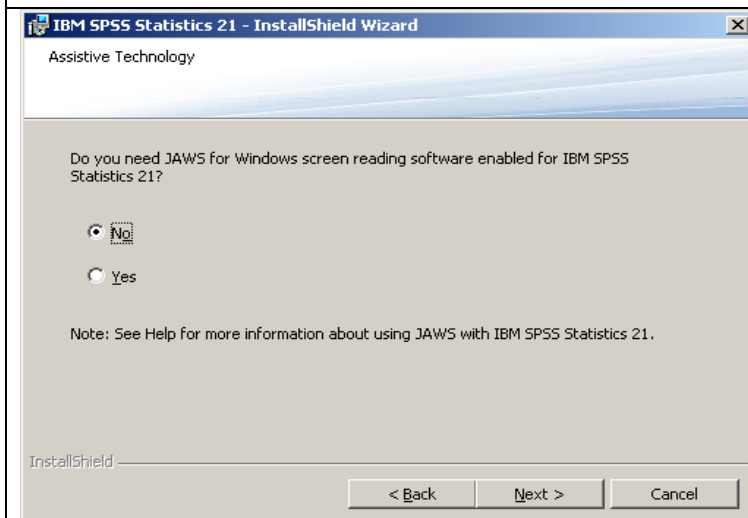
If you accept the Software License Agreement, select the "I accept the terms in the license agreement" radio button and click **Next**.



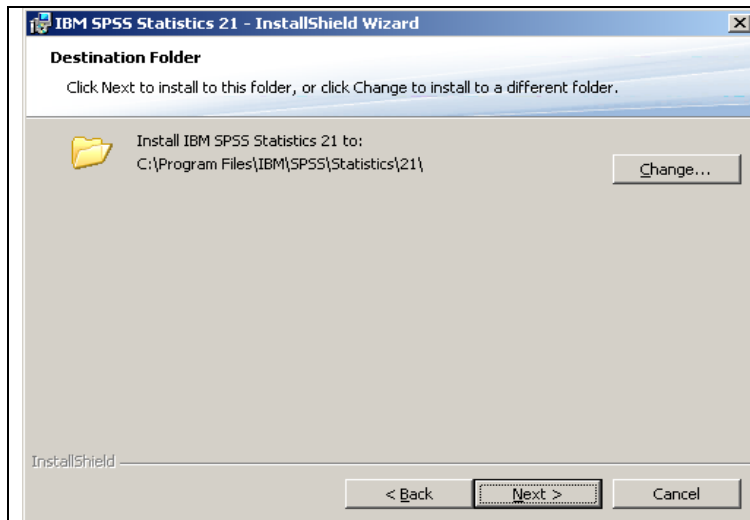
You can fill out the customer information fields with your name in the User Name field. Please keep “Walden” in the Organization field.



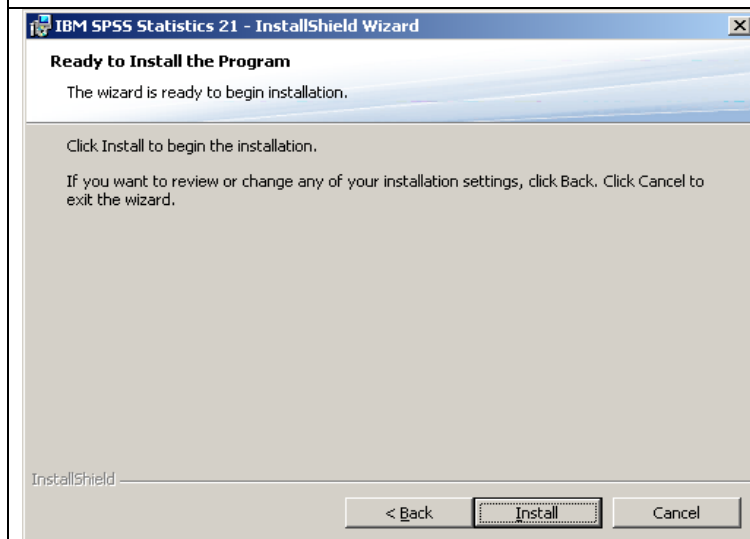
If you would like to install the help file in a language in addition to English, select your desired language and click **Next**.



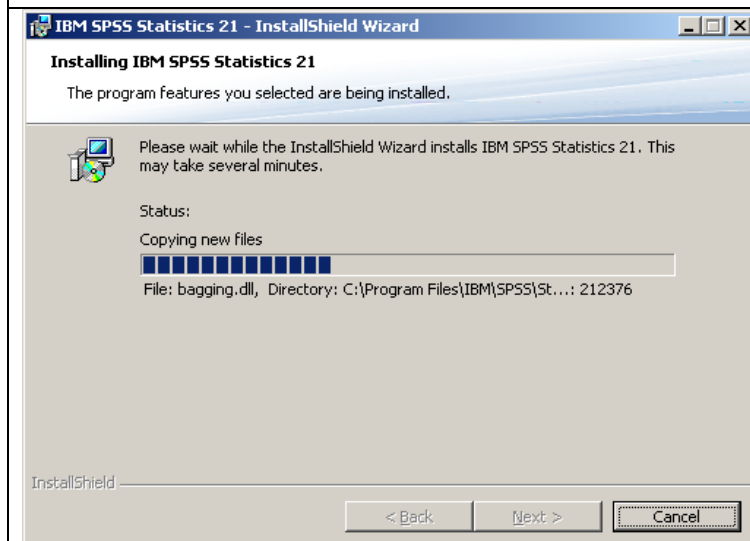
If you plan to use the JAWS screen reader with SPSS, select the **Yes** option in the “Assistive Technology” screen and click **Next**. If not, select **No**.



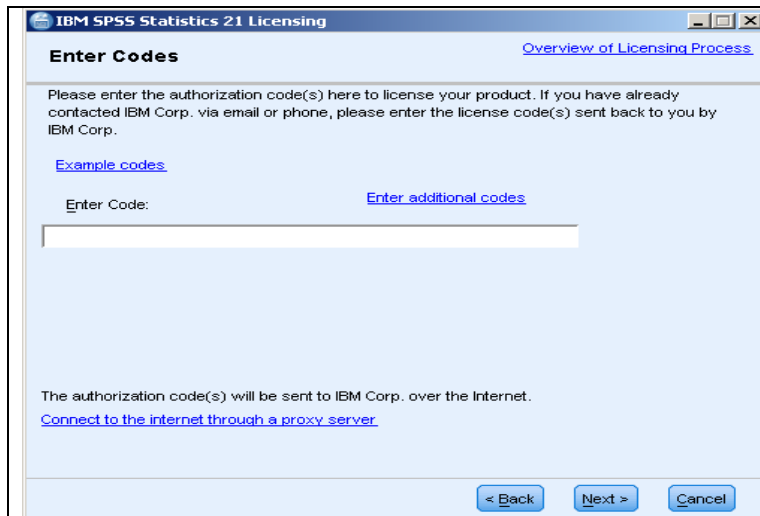
The default install location will automatically be chosen. If you wish to change this, click the **Change** button and browse to your desired location. Then click **Next**.



Click **Install**.

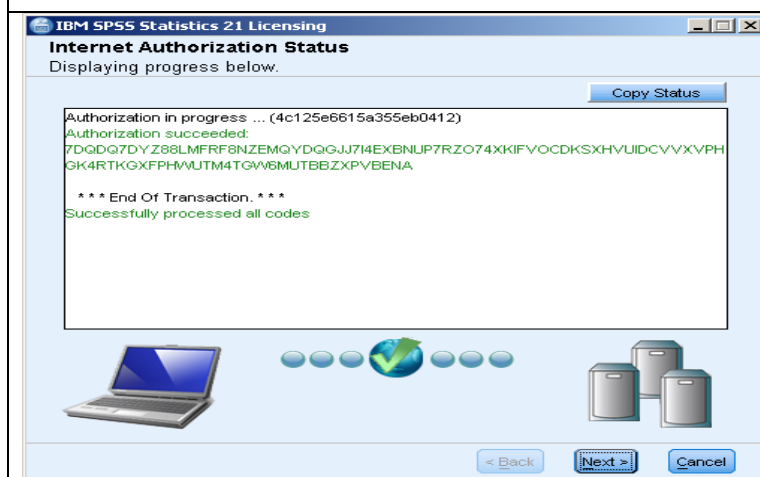


The install process may take a few minutes or longer.



Copy that code from the library and paste it into the **Enter Code** field.

This code will only license the software until September 30, 2013. At that time, you will need to access the library to receive an updated license code. For instructions on how to update your license, access the following link. – https://wa.elearning.laureate.net/bbcswebdav/xid-26404871_1

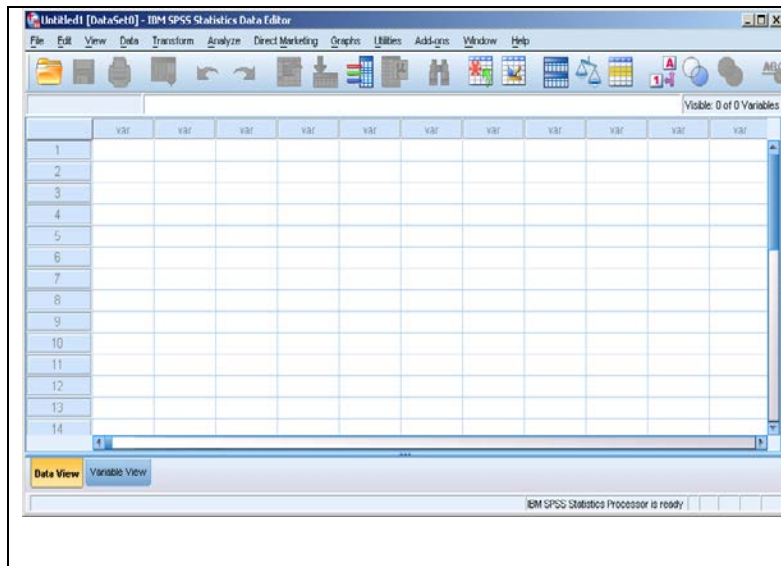


The authorization code will then be verified. Once verification is complete, click **Next**.



Once more a confirmation screen will appear. Click **Finish**.

This concludes the installation process.



SPSS will then be ready for use.

Please note: This copy of SPSS is provided to Walden students solely for academic purposes (completing required course work) and is not authorized for commercial or personal application outside of your Walden assignments and research.